



AIT Complex



5-STORY AIT B/COF – Ft. Lee, VA



1300 PN DFAC – Fort Jackson, SC



AIT Complex

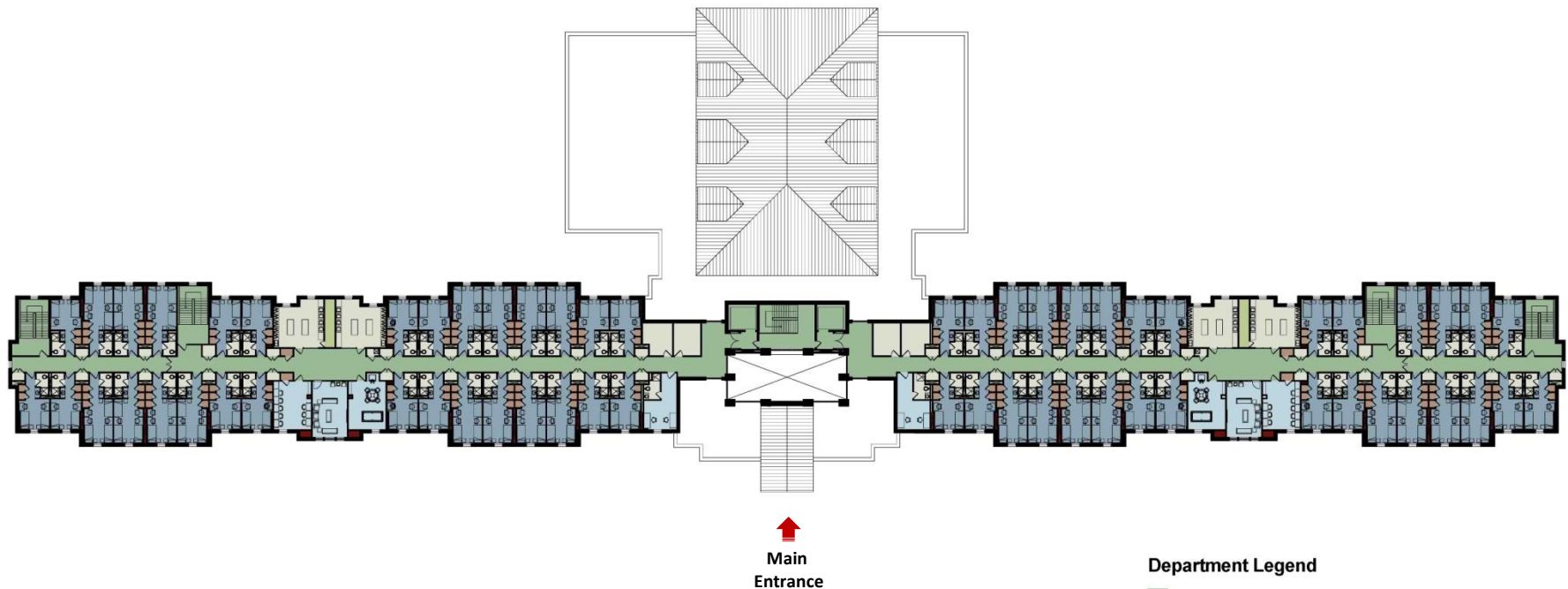
5-Story B/COF - Standard Design





AIT Complex

5-Story B/COF - Standard Design



Second through Fifth Floor

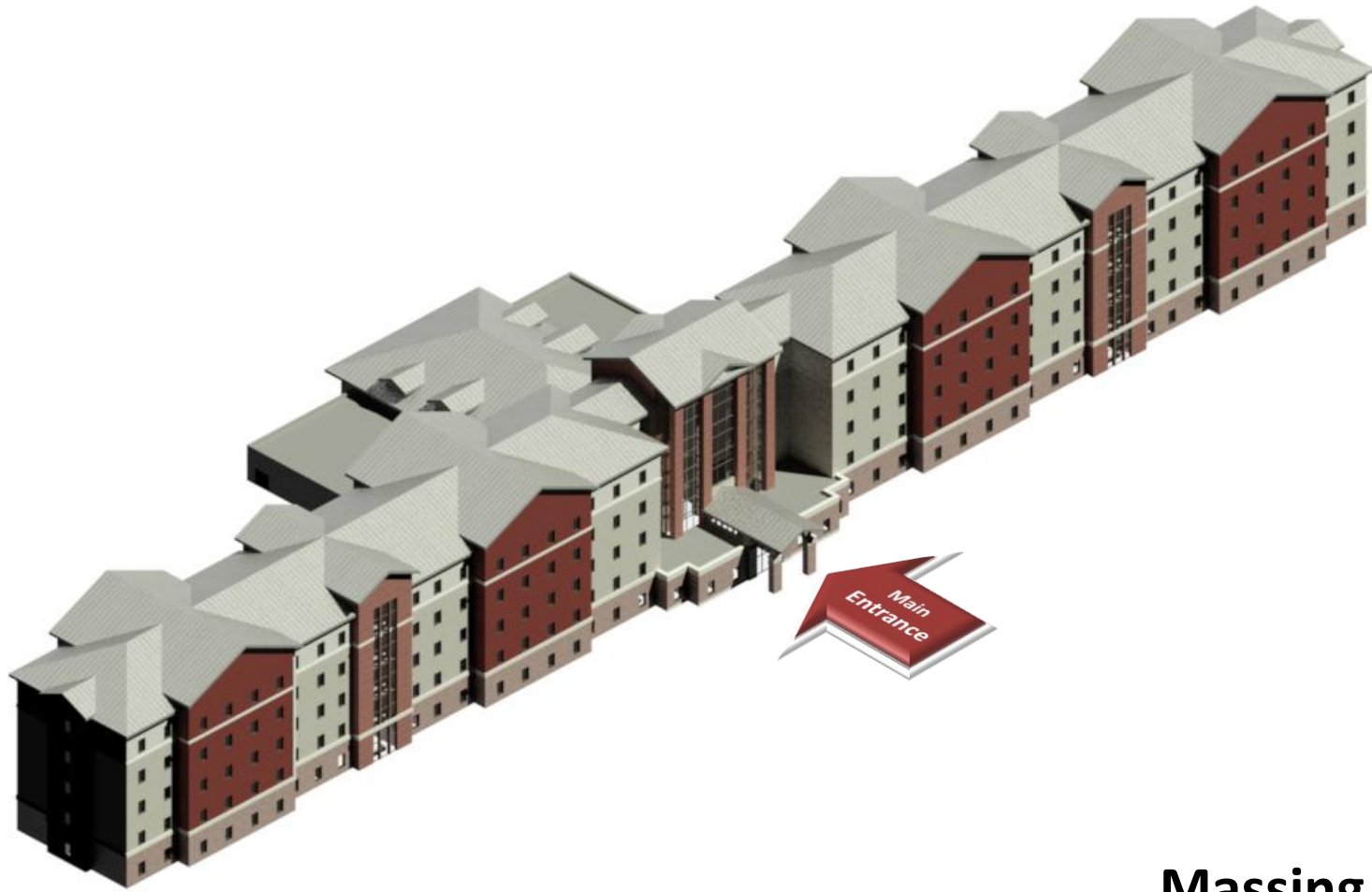
Department Legend

- CIRCULATION
- COMMAND
- SERVICE
- SLEEPING
- STORAGE
- TRAINING



AIT Complex

5-Story B/COF – Standard Design

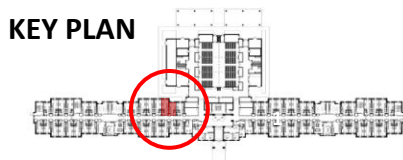
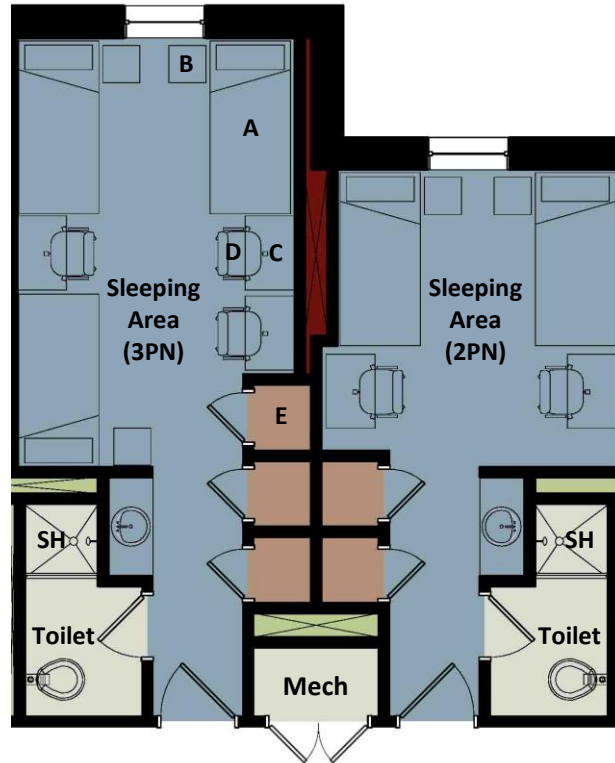


Massing Model



AIT Complex

B/COF Living Quarters



LEGEND

	MECHANICAL CHASE		STORAGE
	SERVICE		CIRCULATION
	SLEEPING		STRUCTURAL CHASE

Design Criteria

- **Base Design Capacity (BDC)**
BDC = 2 Occupants per Sleeping Area in 50% of the Living Quarters
- **Peak Design Capacity (PDC)**
PDC = 3 Occupants per Sleeping Area in 50% of the Living Quarters
- **Allocated Space per Occupant**
Base Design Capacity (BDC): 90 NSF
Peak Design Capacity (PDC): 72 NSF
- **Authorized Furnishings per PN**
 - A. One Bed (39" x 84")
 - B. One Night Stand (18" x 18")
 - C. One Desk (24" x 36")
 - D. One Chair (24" x 24")
- **Authorized Personal Storage**
 - E. Built-In Wardrobe Closet (24" x 36")



AIT Complex

B/COF Standard Design

Grouping of individual rooms to create Living Quarters Modules

1

Standardization of the 14-Room and 16-Room Living Quarters Modules provides symmetry and balance of building's massing with a more cost-effective building/roof structure.

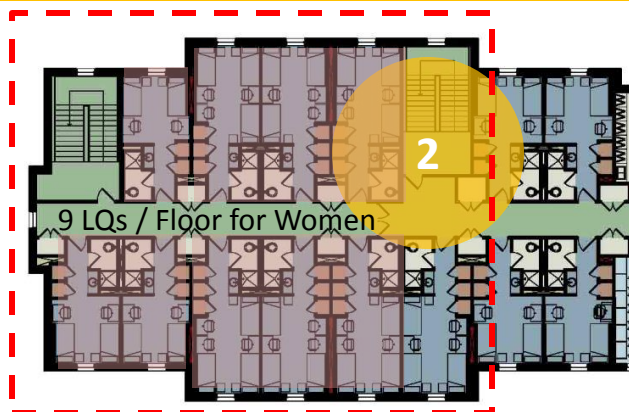
2

Placement of two pair of cross-corridor doors and internal stairs on the upper floors of each wing within the 14-Room Living Quarters Modules provides more flexibility for gender separation and enhanced Safety and Security

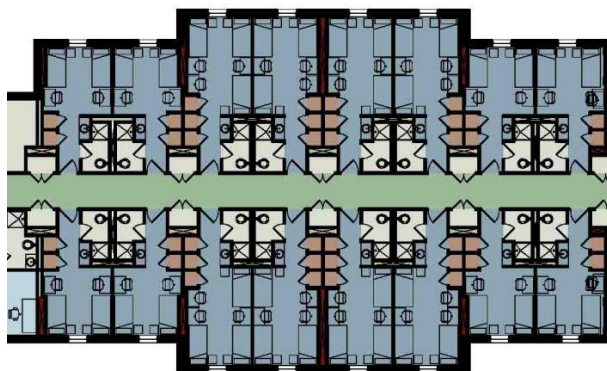
Number of Female Occupants per Floor:

- 1 Flr 18 BDC to 24 PDC 6.0% to 6.4%
- 2 Flrs 36 BDC to 48 PDC 12.0% to 12.8%
- 3 Flrs 54 BDC to 72 PDC 18.0% to 19.2%
- 4 Flrs 72 BDC to 96 PDC 24.0% to 25.6%

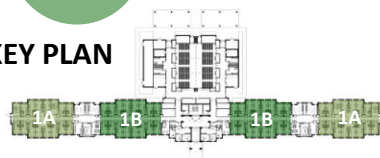
1A Living Quarters: 14 Room Module



1B Living Quarters: 16 Room Module



KEY PLAN



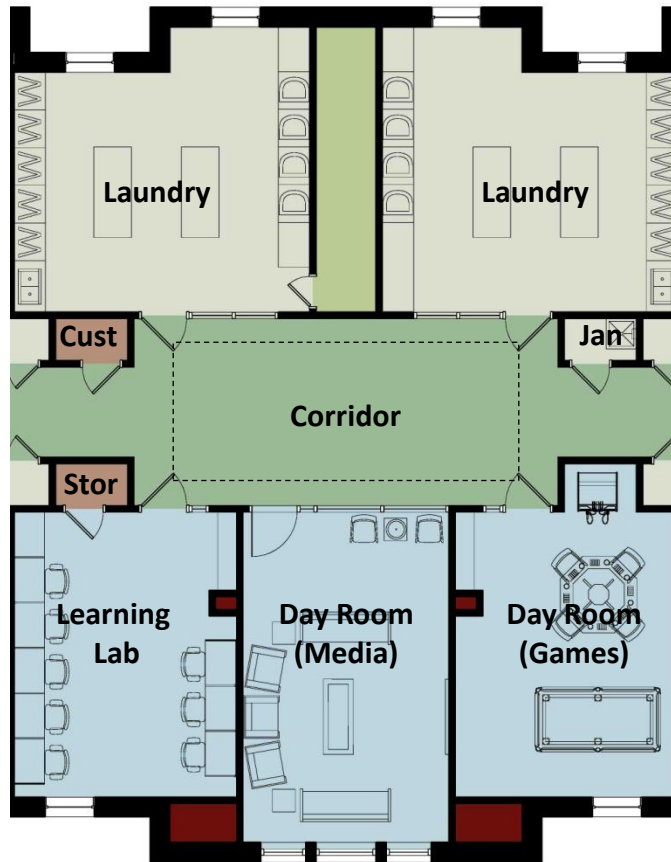
LEGEND

Mechanical Chase	Storage
Service	Circulation
Sleeping	Structural Chase



AIT Complex

B/COF Standard Design



Trainee Support Module

Standardization and Sustainability

- 1 The Standardization of Building Program Components advances the concept of 'Standardization'
- 2 This Module can be reorganized to serve as a transitional space to support multiple 'Building Organizational Concepts'
- 3 These 'Building Organizational Concepts' will provide Installations with the ability to consider multiple site configurations in the development of their Installation Master Plan
- 4 This additional level of 'Standardization' will provide the opportunity to select a 'Building Organization Concept' and Site that consider building orientation and placement minimizing site development costs while addressing sustainability requirements to maximize day-lighting and energy efficiencies

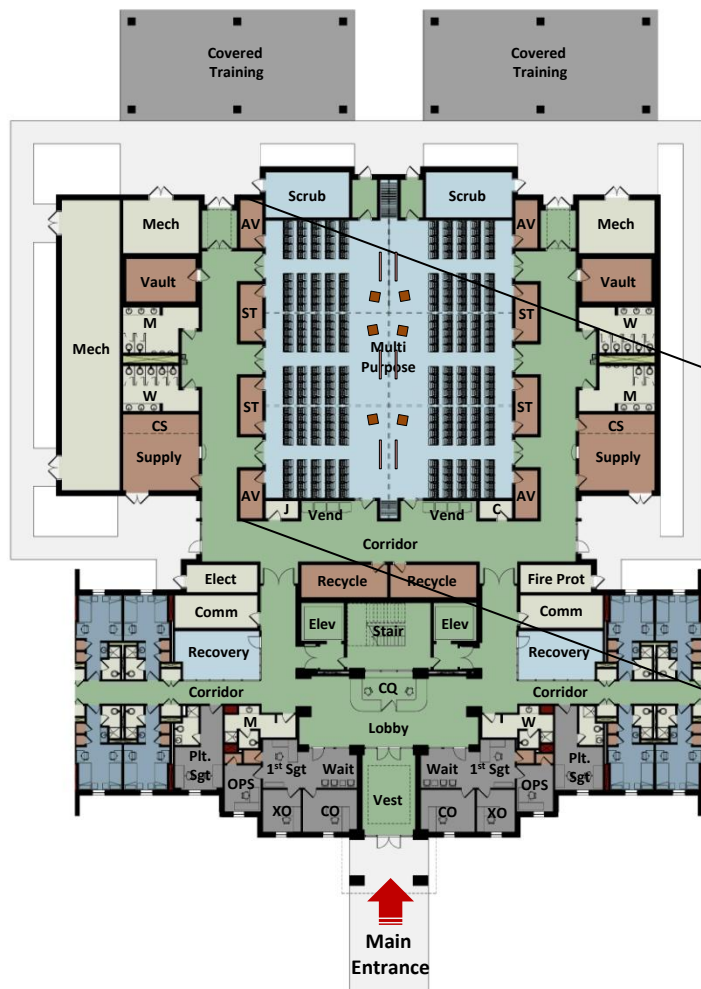


AIT Complex

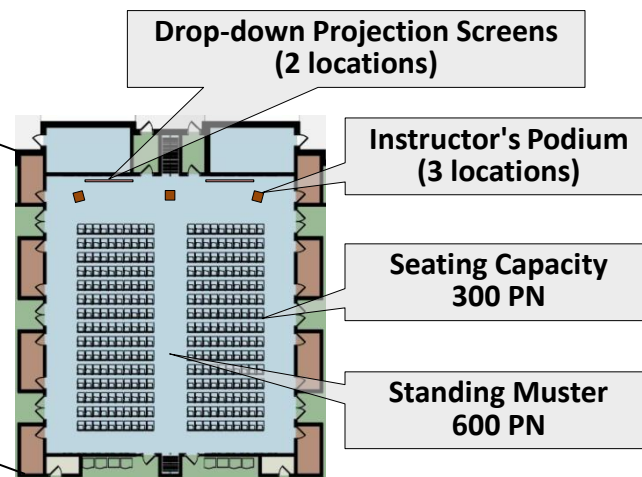
Training Module

Reorganization of the Company Multi-Purpose Rooms to provide adjacency of Instructional Areas within the Training and Instruction Module

- 1 Provides maximum flexibility for instruction and assembly



Training and Instruction Module

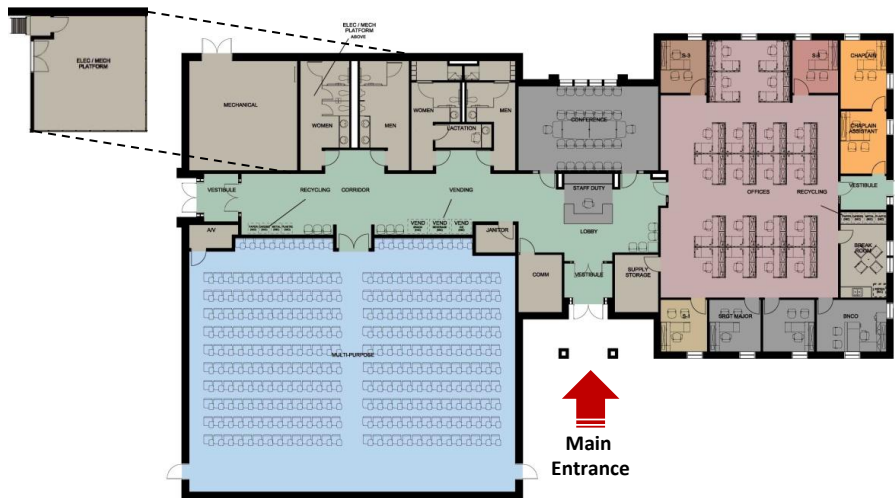


Multi-Purpose Room
Alternative Seating Plan
(300 PN in Chairs w/tablet arms)



AIT Complex

BNHQ Standard Design



Building Plan



Building Image

Department Legend

- CHAPLAIN SUITE
- CIRCULATION
- COMMAND SUITE
- MULTI-PURPOSE
- OFFICES
- S-1
- S-2
- S-3
- S-4
- SERVICE



AIT Complex

BDHQ Standard Design

Department Legend

- CHAPLAIN SUITE
- CIRCULATION
- COMMAND SUITE
- MULTI-PURPOSE
- OFFICES
- S-1
- S-2
- S-3
- S-4
- SERVICE



↑
Main
Entrance